

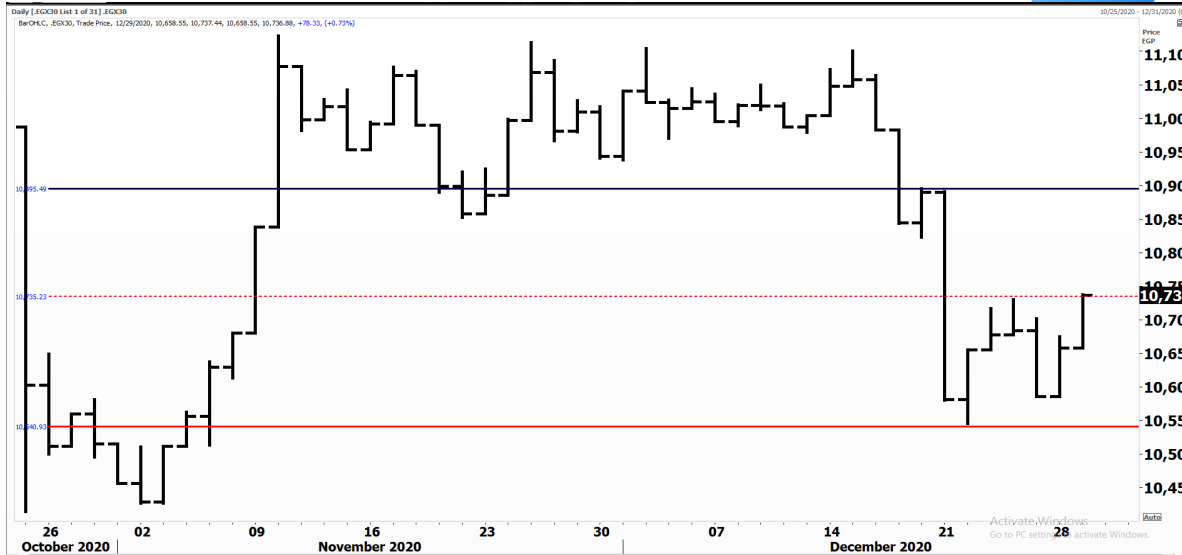


PIONEERSECURITIES

# TECH TO THE POINT

30-Dec-2020

This report must be read with the disclaimer  
on the last page



Last	10,736.88
High Today	10,737.44
Low Today	10,658.55
Volume	M 168.555
First Support	10,550.00
Second Support	10,400.00
First Resistance	10,750.00
Second Resistance	10,900.00
Stop Loss	
HISTORICAL RETURN %	
1 WEEK	0.76%
1 MONTH	-2.47%
1 QUARTER	-2.28%
1 YEAR	-22.96%
YTD	-23.10%

## Analysis

The EGX30 index closed yesterday at its minor resistance that lies at 10,735. as we mentioned, a break above this level will trigger a short-term entry signal and our target will be set around 10,850-10,900.

In other words, today, if the market continues its rise, a new entry signal (on the short-term) will be triggered. We already closed all of our trades last week but will begin to reopen positions once again, if this break takes place.

Those who are already in the market can add to their positions if the market confirms a break above 10,735.

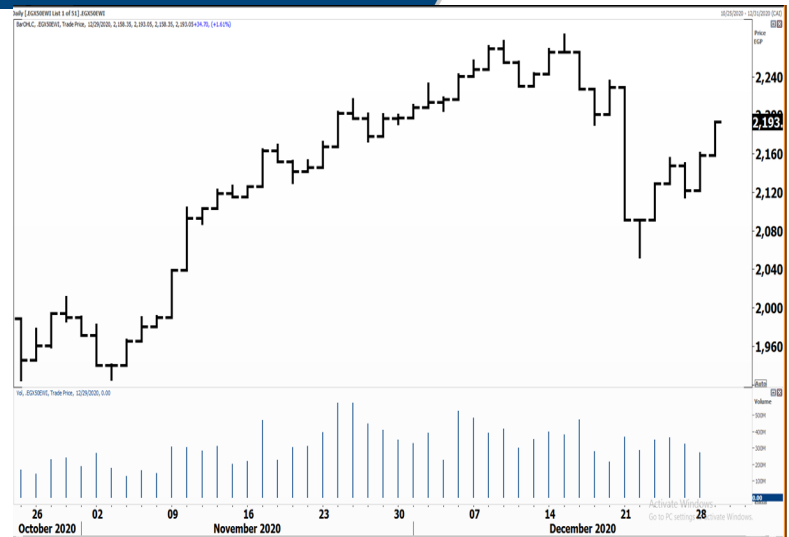
## Egyptian Exchange Equal Weights Index .EGX 50

### Analysis


As for the EGX 50 index, it already broke its minor peak and continued its rise to close at 2,190 and aiming for its peak that lies at 2,275.

Those who want to enter medium caps should choose stocks that are outperforming but also that are not very volatile, to be able to deal if any counter-move takes place.

For now, we are expecting the EGX 50 index to approach its peak.



## Resistance

**SKPC**  Broke 9.2 to the upside and closed clearly above it with high volumes. Next target lies at 12. We recommend opening new positions on intraday dips.


## Support


No stocks broke their support yesterday


## Testing


## Support

## Resistance

**ESRS**  The stock continued its rise sharply to close at 11.11 at its limit up. The 11.5-11.6 area might serve as resistance, especially that the stock witnessed a sharp rise. If any correction takes place, this will be a chance to add to positions or to open new positions. The 11.5-12 area will be our resistance area to watch and our important target. A breakout above this range will lead to a renewed rise.

**SWDY**  SWDY is the next star and we believe that it will be one of the strongest performing stocks in our market. We recommend investors to buy the stock and hold it for the intermediate-term. We are bullish. As for the levels to watch, the 9.4 is the current resistance. A break above it should take place today, which will create a new buy signal with a minimum target of 12.

**AUTO**  Those who want to buy can step in if the 3.5 level is broken upwards. Such a breakout will probably send AUTO near 4.

**CIEB**  The recent rise sent CIEB near 30, which is an important peak to watch. A break above this level will be a bullish sign for CIEB and will send it back near 40.

Symbol	S. Description	Last	Support 1	Support 2	Resistance 1	Resistance 2	Trend	Recommendation	Stop Loss/ Re-Entry
COMI.CA	COM INTL BK/d	59.03	59	58.5	61.8	63	↔	Hold	59
EAST.CA	EASTERN CO/d	13.05	12.3	12	13.34	13.75	↑	Hold	12.3
EKHO.CA	EGYPT KUWAIT H/d	1.019	\$0.99	\$0.97	\$1.04	\$1.08	↓	P.Sell	\$1.04
HRHO.CA	EFG HERMES HOL/d	14.18	13.8	13.3	14.8	15.53	↔	Hold	13.3
TMGH.CA	TALAT MOSTAFA/d	6.5	6.23	6	6.7	6.9	↔	Hold	6
CLHO.CA	CLEOPATRA HOSPITAL COMPANY	4.79	4.45	4.35	4.8	4.95	↔	Hold	4.35
SWDY.CA	ELSWEDY ELECTR/d	9.38	9	8.5	9.4	9.8	↔	Hold	8.5
ETEL.CA	TELECOM EGYPT/d	11.56	11.4	11.2	11.9	12.4	↔	Hold	11.2
ISPH.CA	IBNSINA PHARMA	5.18	5.08	4.85	5.45	5.64	↓	P.Sell	5.64
CIRA.CA	CAIRO INVESTMENT & REAL ESTATE/d	14.45	13.35	12.6	15	15.8	↔	Hold	13.3
JUFO.CA	JUHAYNA FOOD I/d	6.1	5.7	5.39	6.3	6.5	↔	Hold	6.3
CIEB.CA	CREDIT AGRICOL/d	29.50	26.5	25.2	30	31.5	↔	Hold	26.5
OCDI.CA	6TH OCT DEV IN/d	14.76	14	13.3	15.5	16	↑	Hold	14
MNHD.CA	NASR CITY HOUS/d	3.79	3.6	3.5	3.95	4.12	↔	Hold	3.5
EFID.CA	EDITA /d	8.8	8.25	7.75	9	9.7	↔	Hold	8.25
HELI.CA	HELIOPOLIS/d	5.85	5.5	5.11	6	6.35	↔	Hold	5.5
ORWE.CA	ORIENTAL WEAVERS /d	6.8	6.5	6	7.2	8	↔	Hold	6.5
PHDC.CA	PALM HILL DEV /d	1.32	1.28	1.22	1.35	1.41	↔	Hold	1.22
CCAP.CA	CITADEL CAPITA/d	1.443	1.37	1.33	1.45	1.55	↔	Hold	1.33
SKPC.CA	SIDI KERIR PET/d	9.50	9	8.5	9.9	10.25	↔	Hold	8.5
AUTO.CA	AUTO GHABBOUR /d	3.38	3.04	2.95	3.4	3.48	↔	Hold	2.95
EMFD.CA	EMAAR MISR DEV/d	2.35	2.25	2.15	2.4	2.54	↔	Hold	2.15
ORHD.CA	ORASCOM EGYPT/d	4.72	4.35	4.1	4.8	5.25	↔	Hold	4.35
ESRS.CA	EZZ STEEL/d	11.11	10	9.5	11.55	12.5	↑	Hold	9.5
OIH.CA	ORASCOM INVESTMENT HOLDING /d	0.547	0.527	0.515	0.57	0.604	↔	Hold	0.515
EXPA.CA	EXPORT DEVELOPMENT BANK /d	14.14	13.5	12.8	14.5	16	↔	Hold	13.5
IRON.CA	EGYPTAIN IRON & STEEL /d	3.32	3.05	2.95	3.52	3.74	↔	Hold	2.95
DSCW.CA	DICE SPORT AND CASUAL WEAR /d	1.69	1.6	1.5	1.72	1.9	↔	Hold	1.5
BTFH.CA	BELTONE FINANCIAL HOLDING /d	2.45	2.32	2.2	2.55	2.66	↔	Hold	2.2

## Guidelines



**Bullish**



**Bearish**



**Neutral**

Trend: (Upgrade, Downgrade): Change in trend color refers to upgrade or downgrade in the trend relative to the previous trend direction. E.g. change from "↓ Down" to "↔ Flat" is considered an upgrade and vice versa.

**Buy:** Buy the full position.

**P.Buy:** Buy portion of a position

**Hold:** Don't Buy or sell.

**P.SELL:** Sell portion of a position.

**Sell:** Sell the full position.

**Stop Loss:** Completely exit the position (or) Re-entry in cases of Selling.

## Disclaimer

This report has been prepared according to the general data available for public, in accordance with the professional standards applied in that career to the best knowledge of the reporter. The recommendations mentioned are a guiding tool representing a professional opinion, and not granting any profits, consequently it is not obligatory for our valued customers and investors. Pioneers Securities©, Egypt shall not be liable for any direct, indirect, incidental, or consequential damages, including limitation losses, lost revenues, or lost profits that may result from these materials. Republishing this report or any of its contents is subject to prior approval; referring to the source is a must. Opinions expressed are subject to change without notice and may differ or be contrary to the opinions or recommendations of Pioneers Securities©, Egypt Research or the opinions expressed by other business areas or groups of Pioneers Securities©, Egypt as a result of depending solely on the historical technical behavior (price and volume).

## Technical Analysis Department

### Saleh Nasser

Chief Technical Strategist

### Ahmed Hassan

Senior Technical Analyst

### Dina Fahmy

Senior Technical Analyst

### Tips on reading the report

The first page includes an analysis of two major indices in the Egyptian Stock Market; the norm is that we will analyze both the EGX 30 and 70, but sometimes we will compare the EGX 30 to its 50 counterpart if there is important information in this comparison. We also use the Hermes Last Index interchangeably with the EGX 30. The .HRMSL index has an important edge; it uses last prices instead of VWAP. First thing our clients should do is to read the indices analysis carefully to have a clear understanding on our overall view.

The second page includes stocks that broke out beyond their resistance levels, and those that violated their support levels. It also includes stocks that are testing their support levels and those that are testing their resistance. This analysis is important and it is the core of our recommendations. It is important to note though that not all stocks that are testing their support levels are bullish, and not all that are testing their resistance levels are bearish. To make it easier for our clients, we have placed a bull face 🐂 if we consider the stock under study bullish, and a bear face 🐻 if we consider it bearish. We also added a big bullet 🟩 if we are neutral.

It is important to note that you might find a stock that we consider bullish in our analysis (in the breakouts/testing section) but it remains as a hold or partial sell in the table. The conflict here is that the table is more conservative. This will not be an issue with our clients, because our analysis will explain why we are being bullish/bearish on the stock.